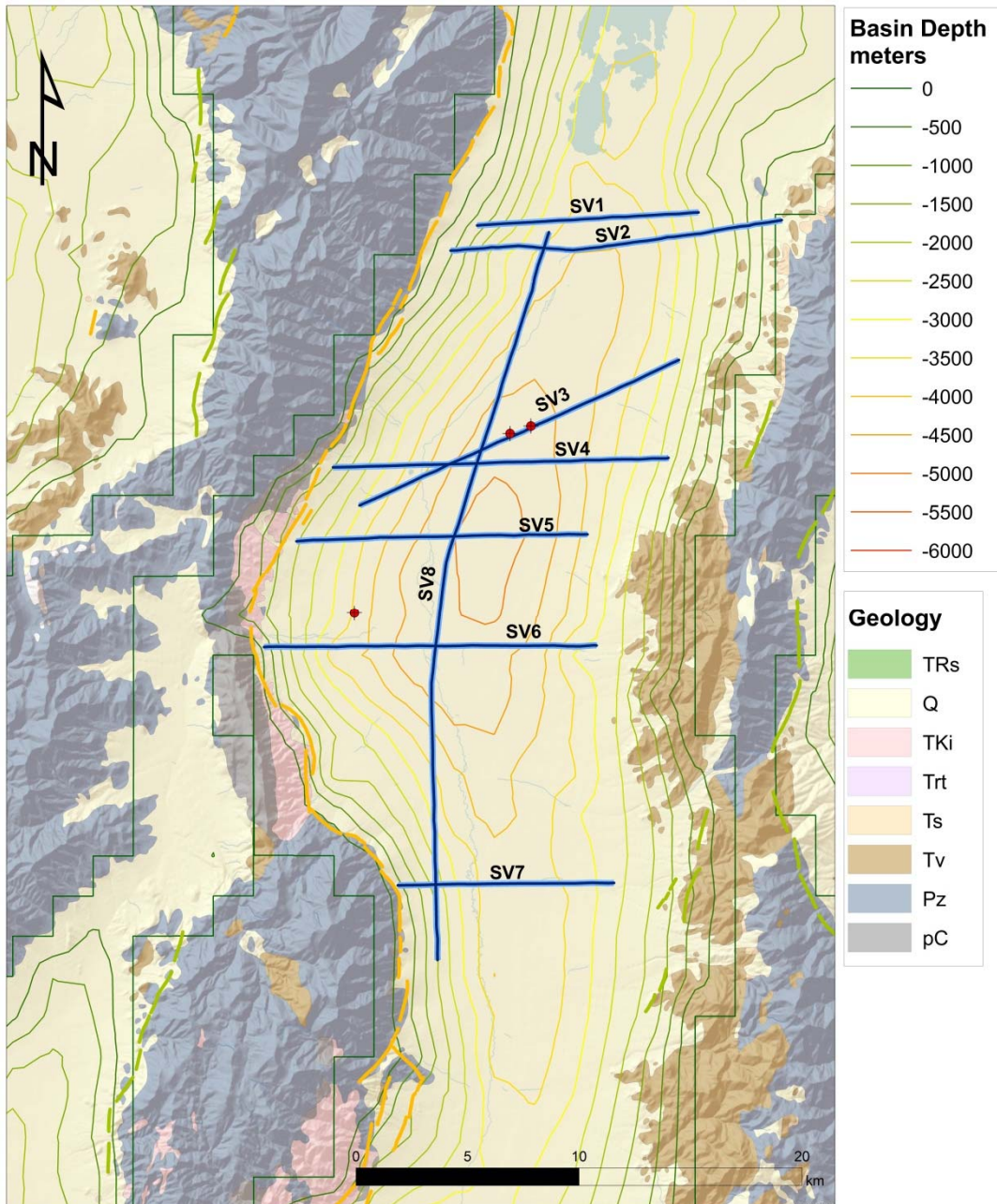


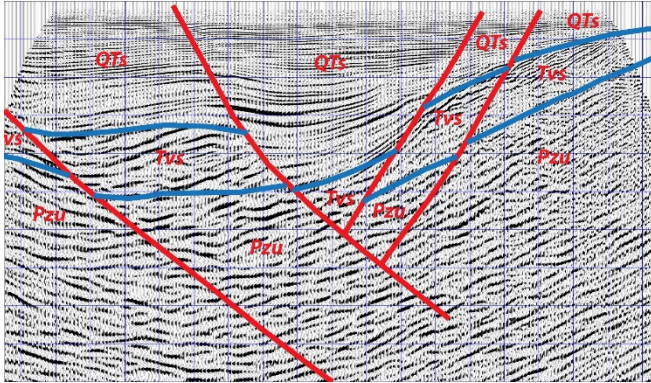
## APPENDIX B

### INTERPRETED SEISMIC REFLECTION PROFILES, STEPTOE VALLEY, NEVADA



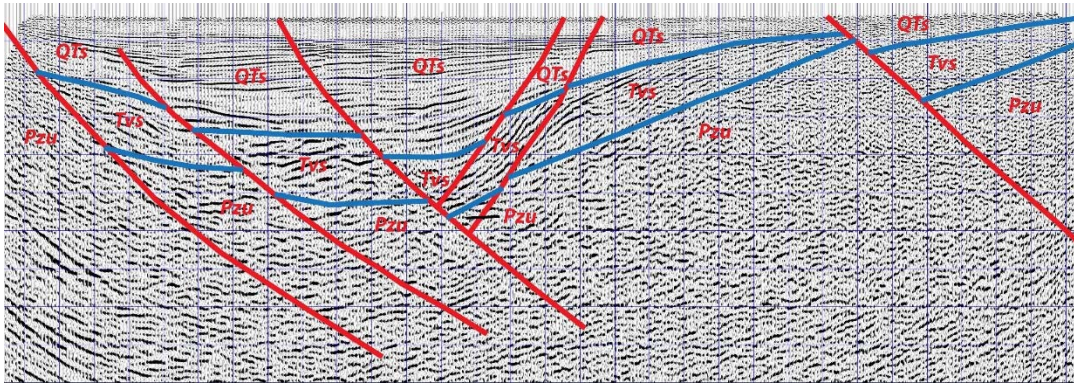
**Figure B-1.** Generalized geologic map of the Steptoe Valley area, showing locations of interpreted seismic reflection profiles, Quaternary faults (red, yellow, and green lines), and depth of Neogene basin-fill sediments. Interpreted profiles are shown by bold blue lines. Red dots are wells with available data from logs, cuttings, or core.

**Profile SV1**



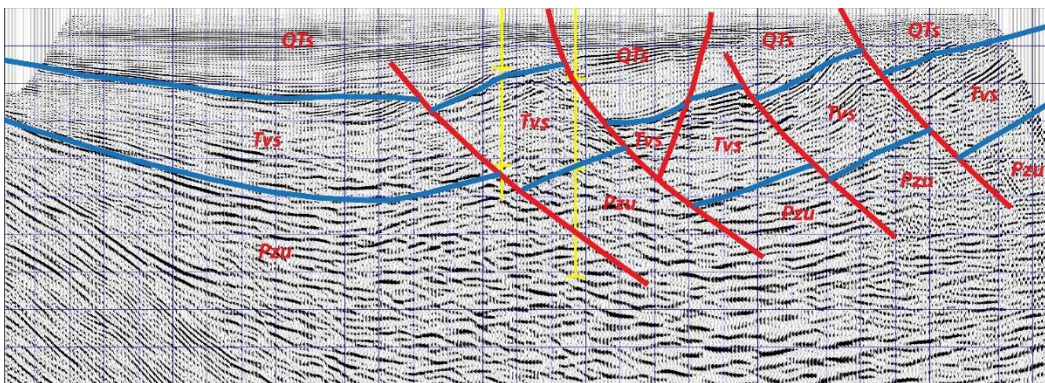
Seismic data owned or controlled by Seismic Exchange, Inc.; interpretation is that of the University of Nevada, Reno.

**Profile SV2**



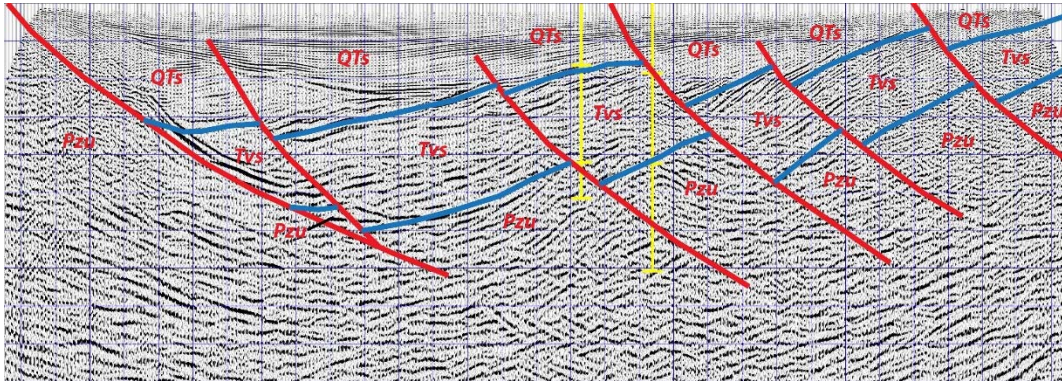
Seismic data owned or controlled by Seismic Exchange, Inc.; interpretation is that of the University of Nevada, Reno.

**Profile SV3**



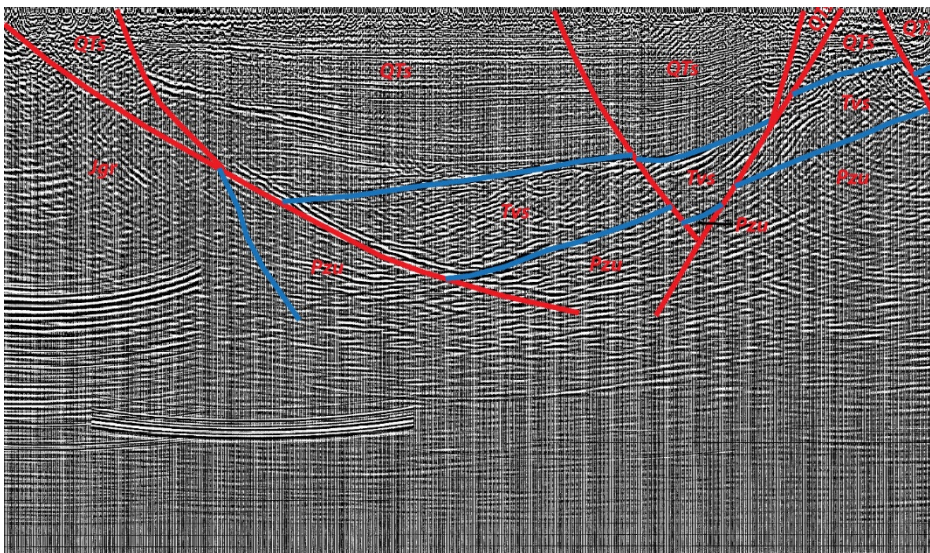
Seismic data owned or controlled by Seismic Exchange, Inc.; interpretation is that of the University of Nevada, Reno.

**Profile SV4**



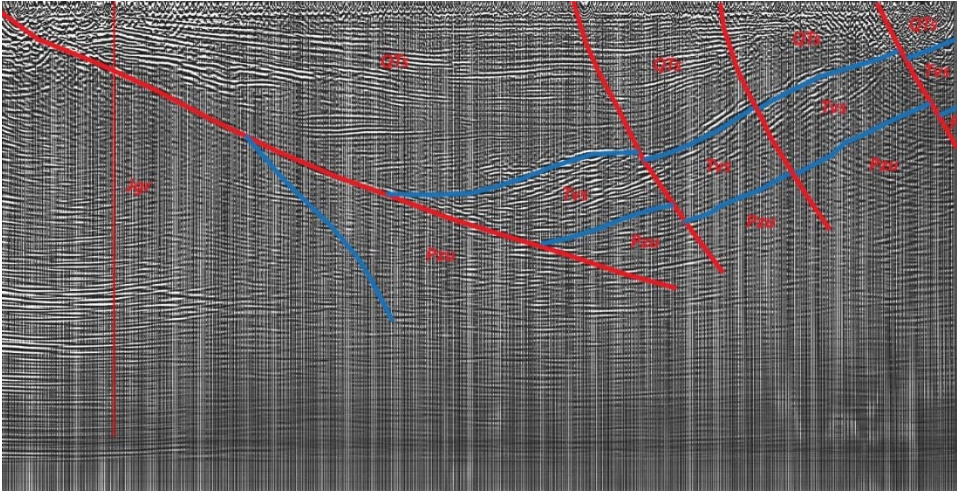
Seismic data owned or controlled by Seismic Exchange, Inc.; interpretation is that of the University of Nevada, Reno.

**Profile SV5**



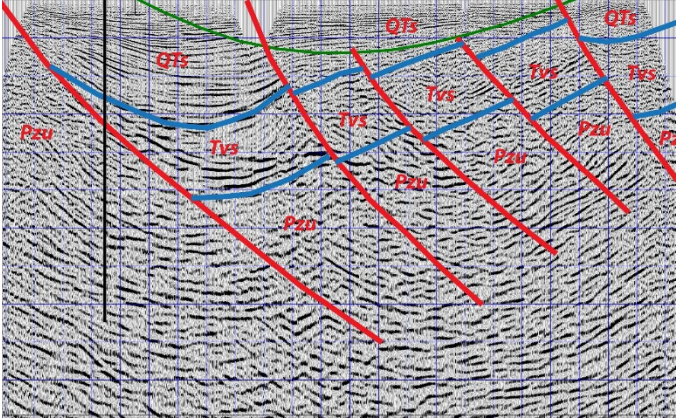
Seismic data owned or controlled by Seismic Exchange, Inc.; interpretation is that of the University of Nevada, Reno.

**Profile SV6**



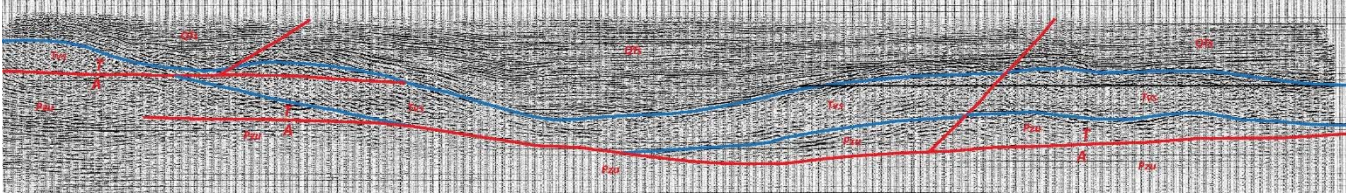
Seismic data owned or controlled by Seismic Exchange, Inc.; interpretation is that of the University of Nevada, Reno.

**Profile SV7**



Seismic data owned or controlled by Seismic Exchange, Inc.; interpretation is that of the University of Nevada, Reno.

**Profile SV8**



Seismic data owned or controlled by Seismic Exchange, Inc.; interpretation is that of the University of Nevada, Reno.